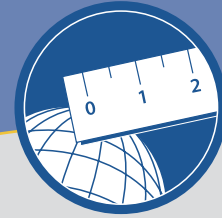




## TRIMBLE GEOSPATIAL

INTEGRATED SOLUTIONS FOR AERIAL AND LAND MOBILE MAPPING, TRANSPORTATION, UTILITIES AND ENERGY TRANSMISSION & DISTRIBUTION INDUSTRIES



## PRODUCTIVE, ACCURATE, RELIABLE

Trimble GeoSpatial is transforming how work gets done by anticipating what's next, and developing industry-leading technology and end-to-end solutions that meet your aerial and land mobile mapping needs. Whether you are a service provider or an infrastructure manager, we streamline the capture and maintenance of high accuracy as-built models for your mapping projects, greenfield development, or existing infrastructure. As part of the Trimble Connected Site solutions, high accuracy as-built models enable advanced process and workflow integration from the planning phase, through design and construction, to the subsequent maintenance phase—delivering significant improvements in productivity.

Our innovative geospatial technologies provide productivity gains across your organization for:

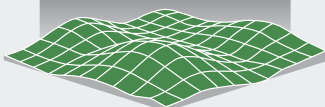
- Capturing georeferenced data;
- Extracting features and attributes;
- Analyzing conditions and change;
- Managing assets and operations; and
- Generating information for business management.

Put geospatial data to work in your enterprise immediately.

# RolleiMetric

## GEO-3D

TopoSys®



inpho



## WE ARE BETTER TOGETHER

Trimble GeoSpatial has its roots in four of the industry's leading spatial imaging companies: Geo-3D, an innovator of georeferenced mobile mapping technologies; RolleiMetric, an innovator of aerial metric cameras; Toposys, an integrator of multiple technologies into complete aerial data capture systems; and INPHO, a developer of end-to-end photogrammetric and terrain modeling software.



## AERIAL METRIC CAMERAS

High resolution digital cameras are designed for the demands of aerial applications. Dual and quad head configurations provide cost effective increases in image footprint or simultaneous RGB and color-infrared (CIR).

## AIRBORNE SYSTEMS

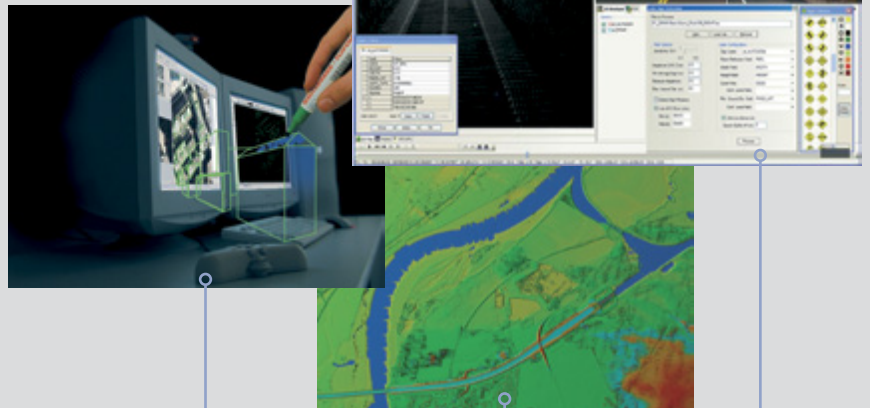
Turnkey systems integrate best-in-class components and subsystems to get you flying faster, and without the risk and complexity of integrating your own system. Trimble DSS integrates a medium format camera with direct georeferencing and flight management systems. Trimble Harrier combines a wide-angle full waveform digitization laser scanner with a Trimble Aerial Camera, providing the perfect tool to map corridor infrastructure.





## LAND MOBILE SYSTEMS

Trimble has more experience than anyone in the industry integrating GNSS and GNSS augmentation systems, inertial, DMI, cameras, laser scanners and other sensors into mobile mapping systems. Whether you want to expand your business into asset management, pavement management, or mobile survey, Trimble is the right technology and business partner to ensure your road to success.



## ACCURACY OPTIONS

Trimble offers a range of georeferencing solutions at different accuracy levels to meet the needs of your application as well as your budget. Trimble Global Navigation Satellite System (GNSS) receivers in conjunction with Trimble's world-leading GNSS infrastructure solutions or other GNSS augmentation systems ensure you get accurate results. GNSS-inertial or GNSS-inertial-DMI systems additionally provide sensor orientation and improve continuity in GNSS-challenged environments like urban canyons.

## PRODUCTIVE SOFTWARE SOLUTIONS

Trimble offers end-to-end solutions for your aerial and land mobile workflows. For 30 years Trimble has been at the forefront of research and development in GNSS technology, mobile mapping, and photogrammetry—and you get the benefits. Trimble's field and office software is optimized for fast and efficient production—delivering both the technical and business results you expect.



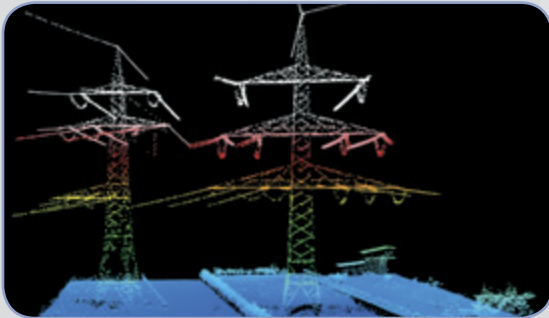
## **AERIAL PHOTOGRAMMETRY AND LASER SCANNING**

Precision, accuracy, efficiency, reliability—our data capture and data processing solutions enable you to deliver imaging data more quickly than ever before, ultimately saving time and cutting project costs. Having hundreds of years of collective experience in all aspects of photogrammetry and laser scanning, we are defining a new vision for the geospatial industry—and investing to make it a reality.



## **TRANSPORTATION**

When your organization needs a complete and accurate inventory of all its assets—on the roadway or railway, or in the right-of-way—Trimble's mobile mapping solutions have you covered. You will save time and money with field and office workflows optimized for efficient data capture. And our mobile survey and pavement management solutions dramatically increase productivity over alternative solutions. Trust your mobile survey to a survey company.



## **UTILITIES TRANSMISSION AND DISTRIBUTION**

Whether you are selecting the route for a new transmission line from a wind farm, executing your vegetation management program, or responding to an outage or natural disaster, you need confidence your geospatial and engineering data won't let you down. Trimble's corridor mapping solutions give you the information you need to make the right decisions quickly.



## **ENERGY TRANSMISSION AND DISTRIBUTION**

You are faced with complex engineering, compliance, and operational challenges—cadastre registration, asset mapping, compliance reporting, encroachment assessment, and disaster planning & response. Empower your organization, in the office and in the field, with high accuracy and high resolution geospatial models of your infrastructure.

## TRIMBLE GEOSPATIAL

Using mobile mapping, photogrammetry, and laser scanning to complement Trimble's Integrated Surveying, Spatial Imaging, Site Positioning, and Mapping & GIS solutions, our focus is on integrating these technologies into end-to-end solutions that effectively tackle real-world challenges faced by service providers as well as infrastructure managers. Our solutions streamline the capture and maintenance of high accuracy as-built models for aerial and land mobile mapping, transportation, and utilities and energy transmission & distribution industries. As part of the Trimble Connected Site solutions, high accuracy as-built models enable advanced process and workflow integration from the planning phase, through design and construction, to the subsequent maintenance phase—delivering significant improvements in productivity.



[www.trimble.com](http://www.trimble.com)  
[geospatial\\_sales@trimble.com](mailto:geospatial_sales@trimble.com)

**NORTH & SOUTH  
AMERICA**  
**Trimble Navigation Limited**  
10355 Westmoor Drive  
Suite #100  
Westminster, CO 80021  
USA  
+1-720-587-4905 Phone  
+1-720-587-4878 Fax

**EUROPE, MIDDLE EAST  
& AFRICA**  
**Trimble Germany GmbH**  
Smaragdweg 1  
70174 Stuttgart  
GERMANY  
+49-711-228810 Phone  
+49-711-2288111 Fax

**ASIA-PACIFIC**  
**Trimble Navigation  
Singapore PTE Limited**  
80 Marine Parade Road  
#22-06 Parkway Parade  
Singapore, 449269  
SINGAPORE  
+65-6348-2212 Phone  
+65-6348-2232 Fax